

INTERIM DEHCHO LAND USE PLAN COOL FACTS!

DEH CHO LAND USE PLANNING COMMITTEE
One Land One Plan



Ndéh Éié - Mek'éé Ats'et'í Éié
Dehcho Níéhé T'áhagot'í gha Saáhniogjáh-ké

What is the purpose of the Dehcho Interim Land Use Plan?

The 2001 Dehcho First Nations Interim Measures Agreement requires the development of a land use plan as a **land management tool** to outline what types of activities should occur, where they should take place and terms and conditions necessary to guide land use proposals and development projects over time.

How large is the Dehcho Region?

The interim plan applies to the entire Dehcho region (215,000 sq km) except:

- Nahanni National Park Reserve (30,000 sq km),
- Hay River Reserve, and
- within boundaries of communities.

Dehcho – Telemie



The Dehcho plan area is twice as large as the island of Newfoundland

What is the balance of lands for conservation and lands for development?

The *Dehcho First Nations Interim Measures Agreement* says a Dehcho land use plan should balance lands for conservation and lands for development. The plan should reflect Dehcho community values and priorities and take into consideration the interests of all Canadians. The Interim Plan proposes the following balance of lands in the Dehcho region— 49% primarily for conservation (if Nahanni National Park Reserve is included) and 51% lands where most types of land use activities may be permitted.

How does the draft Interim plan compare to other recent land use plans in Canada?



The **draft Interim Dehcho Land Use Plan** is one of the best land management tools in Canada. It has six types of zones that describe where and under what conditions land use can take place. It addresses the **five** key land use activities of **mining, commercial timber development, oil and gas, agriculture and tourism**. It will provide clear advice to regulators and applicants of what is expected. It proposes an innovative method to measure cumulative effects to protect important habitat. It directs applicants to work with affected communities. **It will protect lands important to communities for cultural or traditional activities**. And, it will provide opportunities for jobs in conservation and resource development.

How many meetings were held with Dehcho residents, leaders and stakeholder groups to develop the plan?



Since 2001, the committee has held workshops with leaders, elders and Dehcho resource managers, regular updates to Dehcho Process Main Table; Dehcho First Nations Information Sessions in 2004, 2005, 2006, 2008, 2012, 2013, 2016, 2018 and updates at each DFN Annual Assembly.

Can the Interim Dehcho Land Use Plan be changed?

Like community plans, the Dehcho land use plan would be reviewed every five years. In the interim, there would be a process in place to review requests for zoning changes.

What different land use activities may be permitted? The interim plan proposes six types of land use zones:

- Six **Candidate Protected Areas Zones** (42,000 sq km) - under existing land withdrawals, no land uses are currently permitted. When protected areas are established, management plans will identify permitted uses, such as tourism.
- Sixteen **Conservation Zones** (23,000 sq km) - tourism may be permitted in all zones except Birch Lake.
- Six **Special Management Zones** (9,000 sq km) - tourism and commercial timber development may be permitted in all six zones, agriculture in four zones, oil/gas in one zone—Jean Marie River South
- Twelve **General Use Zones** (44,000 sq km) - tourism, commercial timber, agriculture, mining and oil/gas may be permitted.
- Eighteen **Special Development Zones** (66,000 sq km) - Tourism and commercial timber development may be permitted in all eighteen zones except Trout River, mining and oil/gas in all eighteen zones and agriculture in four zones .
- Two **Special Infrastructure Corridors** (2,000 sq km) - For proposed Mackenzie Gas Project and Netla Arrowhead feeder pipeline.

Dehcho — North Arm



Traditional hunting and trapping activities are not affected by the land use plan.

How is the Interim Dehcho Land Use Plan different from the Gwich'in and Sahtu land use plans?

Land claims agreements have been completed in the Gwich'in and Sahtu regions. These agreements require the development of land use plans and legally require everyone to adhere to implementing an approved plan. Under the *Dehcho First Nations Interim Measures Agreement*, the Interim Dehcho land use plan may be implemented before the Dehcho process is completed.

Who is on the Dehcho Land Use Planning Committee?

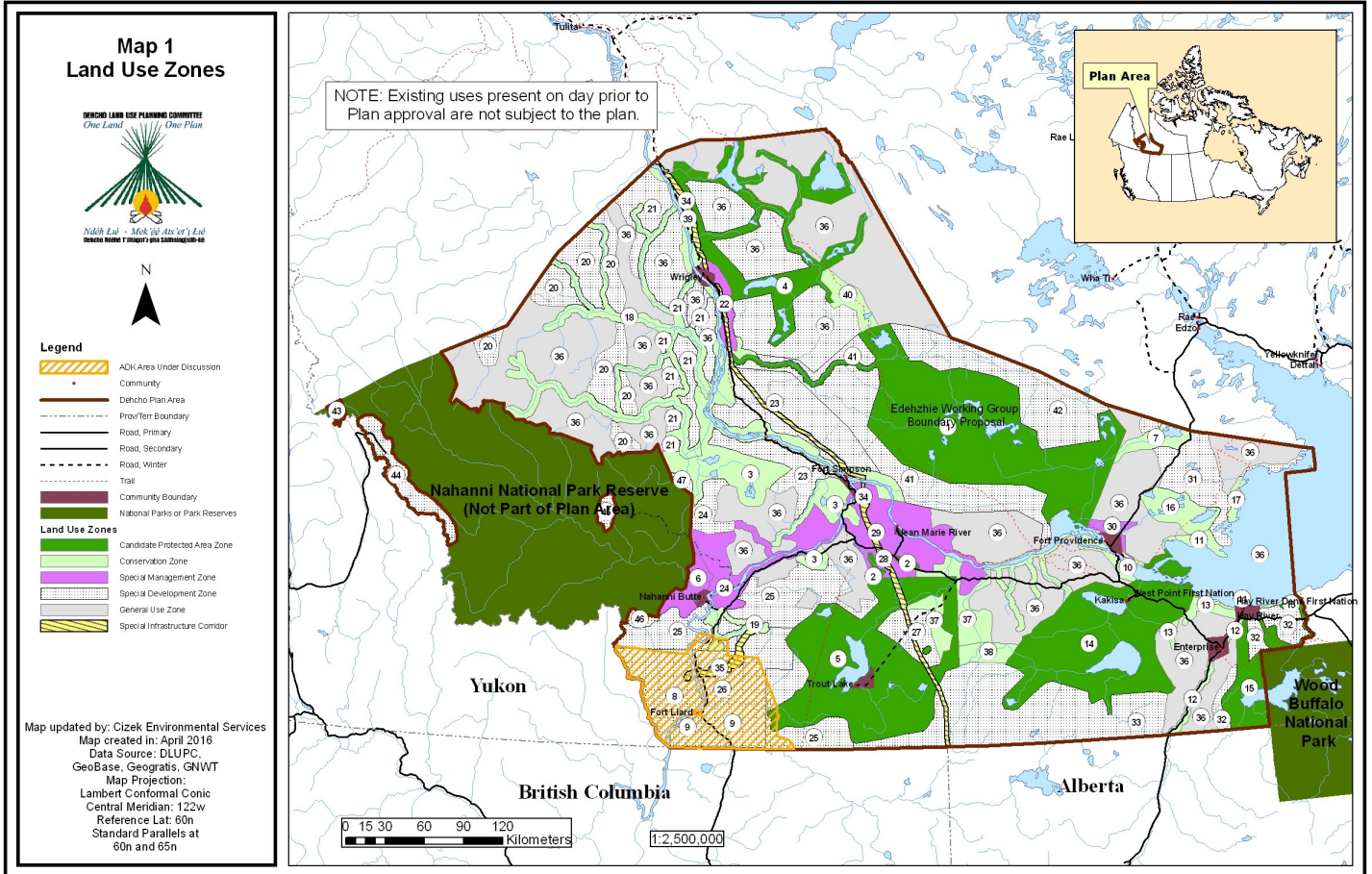
The Dehcho Land Use Planning Committee is a non-profit Society with an office in Fort Providence. The Committee has 2 members from the Dehcho First Nations (DFN), one from Canada and one from the GNWT. The Chair is appointed by other members. The Committee reports to the Dehcho Process Main Table.

Herb Norwegian and **Allen Bouvier** are appointed as the two DFN members. **Canada** appointed **Anne Marie Doyle**. The **GNWT** appointed **Terry Hall**. **Joachim Bonnetrouge** is Chair of the Committee.

Liidlii Kue



One Land, One Plan



Tthe'ehdeli

Ka'agee Tu



Proposed Interim Dehcho Land Use Plan

DEHCHO LAND USE PLANNING COMMITTEE

PO Box 199
Fort Providence, NT
X0E 0L0

Phone: (867)699-3162
Fax: (867)699-3166
Email: dclandplan@ssimicro.com

Website: www.dehcholands.org

