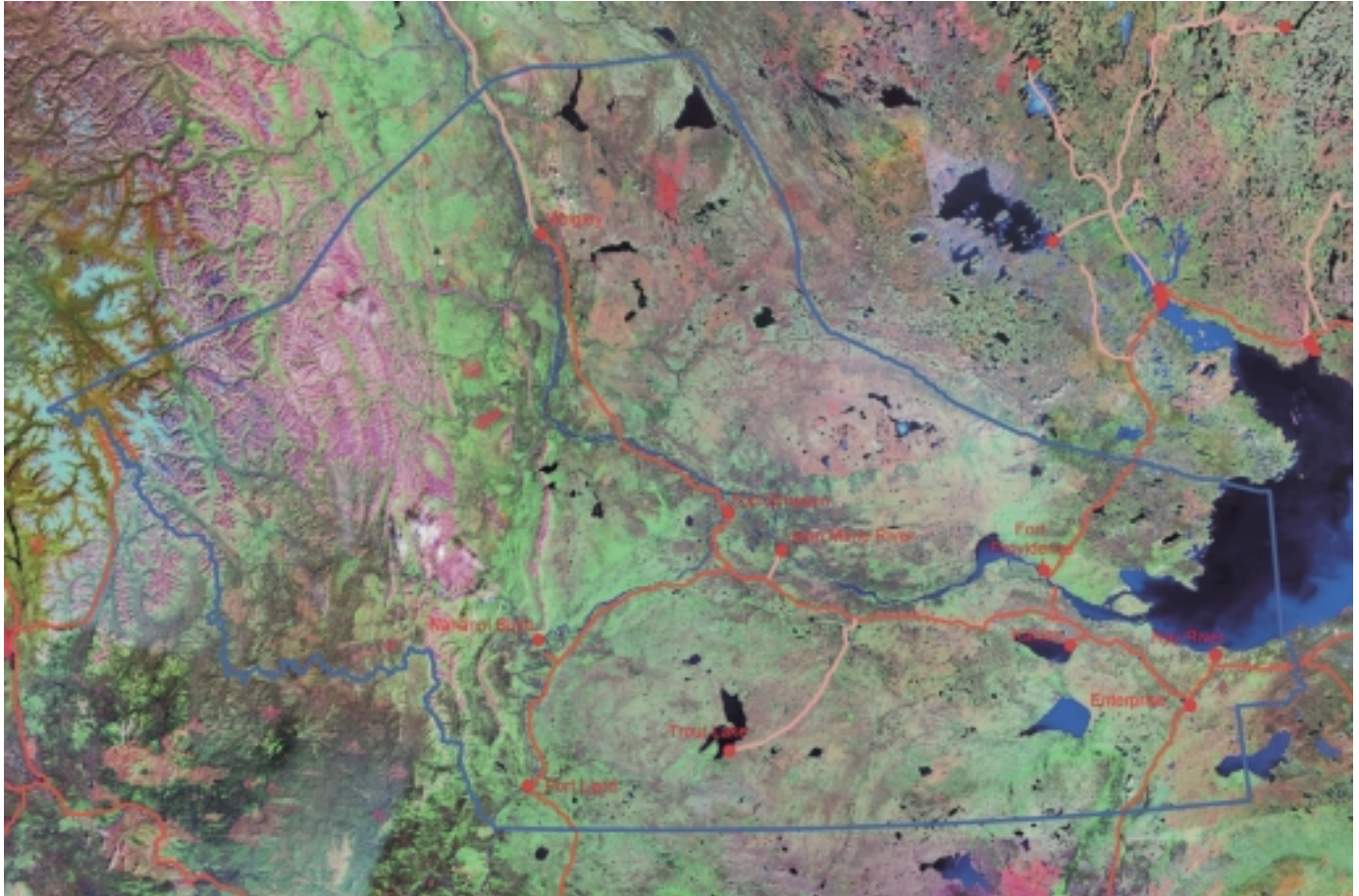


# 2002-03 Annual Report

## Deh Cho Land Use Planning Committee



**DEH CHO LAND USE PLANNING COMMITTEE**  
*One Land One Plan*



*Ndéh Łié - Mek'ęę Ats'et'ı Łié*  
Dehcho Ndéhé T'áhagot'ı gha Sáhniogjáh-ké

March 31, 2003

## **Chairperson's Message**

I would like to take this opportunity to update the Deh Cho First Nations, residents of the Deh Cho, Northwest Territories and Canada on the activities of the Deh Cho Land Use Planning Committee (the Committee).

As background the Committee was established under the Deh Cho Interim Measures Agreement (IMA) with the responsibility to prepare a land use plan (the plan) for the Deh Cho territory. The land use planning process is a community driven process where the goals and values of the residents of the Deh Cho guide the development of the plan. The Committee also works closely with other planning partners such as governments, public agencies, non-government organizations and businesses to fulfill our mandate. For clarity, the Plan is required to promote the social, cultural and economic well being of residents and communities in the Deh Cho territory, having regard to the interests of all Canadians.

We know that some land uses can co-exist while others must compete for the use and development of renewable and non-renewable resources. As a result many difficult decisions will need to be made as we work with the communities and our planning partners over the coming months. The questions we will be asking are: Where is the best place to develop natural resources to maximize economic benefits for the Deh Cho, NWT and Canada? Where should development be prohibited to protect areas of significant cultural or ecological value? How can we develop our resources in a responsible manner to ensure the long-term prosperity of the people and our land? The people of the Deh Cho will need to play a lead role in these decisions as decisions on how to manage the land will directly affect us and our future generations.

This year has seen the completion of several research initiatives aimed at gathering information on the natural resource potential of the Deh Cho territory. We will be coming to communities shortly to share the information gathered and work with you on the development of options related to how the land should be used. We will also be working with our other planning partners to ensure all interests are represented. We look forward to the interesting discussions, opportunities and challenges ahead of all of us as we plan our future together.

Mahsi.



Herb Norwegian  
Chairperson, Deh Cho Land Use Planning Committee

## Introduction



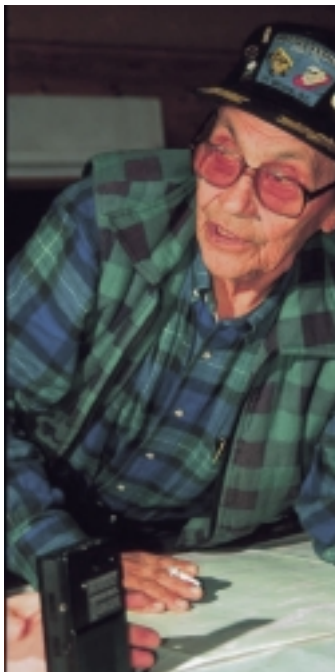
The Deh Cho Land Use Planning Committee, the “Committee”, was formally established in February 2002 under the authority of the Deh Cho Interim Measures Agreement. The purpose of the land use plan is to promote the social, environmental, cultural and economic well being of residents and communities in the Deh Cho territory, having regard to the interests of all Canadians. This will be accomplished by taking into consideration the principles of respect for the land as understood and explained by the Deh Cho Elders, and sustainable development. The Plan shall provide for the conservation, development and utilization of the land, waters and other resources in the Deh Cho territory.

## What is Land Use Planning?



Land use planning outlines what types of activities should occur, where they should take place, and the terms and conditions necessary to guide land use decisions over time. It requires a clear vision of how we want the land and the people to be in 20 or 30 years. The Plan becomes the roadmap that guides decisions at every turn to take us where we want to go. Once approved, the Land Use Plan will provide legally binding direction to regulatory agencies and decision-makers in their assessment of development projects, protected area proposals and other land uses. The planning area includes all lands in the Deh Cho territory outside the existing boundaries of a local government and Nahanni National Park Reserve. The planning area excludes municipal areas and Nahanni National Park Reserve.

## Goals for 2002/03



The goals for this fiscal year as established in the work plan were to complete outstanding Phase 1 obligations while focusing on items 8 to 13 in Phase 2 of the Draft Guidelines for the Development of a Deh Cho Land Use Plan “the guidelines” (Appendix 2 of the Interim Measures Agreement). Phase 2 is primarily the information gathering and analysis stage of the planning process and entails:

- ✓ Producing maps identifying:
  - sensitive lands for traditional use and occupancy (item 8),
  - cultural sites, critical habitat and related harvesting patterns (item 9),
  - resource development potential in the mineral, hydrocarbon, forestry, tourism and agricultural sectors (item 10);
- ✓ Producing a socio-demographic forecast to identify job creation and training needs in the Deh Cho over the next 20 years (item 11);
- ✓ Coordinating an Economic Development Assessment (item 12); and
- ✓ Integrating the maps and information gathered to identify development opportunities, and social and ecological constraints (item 13).



## **Interim Progress Report**

**[April/02 - October/02]**

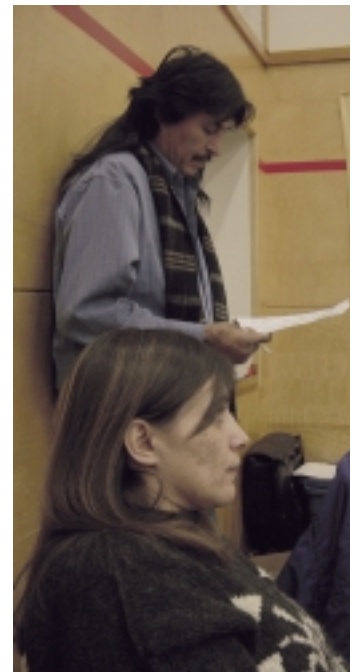
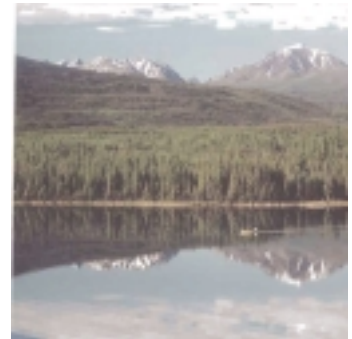
Under the terms of the Comprehensive Funding Agreement between Her Majesty the Queen in Right of Canada and the Deh Cho Land Use Planning Committee, an Interim Activity Report was submitted outlining activities completed from April 1 to October 31, 2002. The following is a brief summary of that report.

### **Membership**

The Deh Cho Land Use Planning Committee includes representatives of the Deh Cho First Nations (DCFN), Government of the Northwest Territories (GNWT) and Government of Canada. As outlined under the Deh Cho Interim Measures Agreement DCFN appointed two members while the GNWT and Canada each appointed one member. Upon the recommendation of the Committee, the parties to the IMA appoint a fifth member as Chairperson.

The members of the Deh Cho Land Use Planning Committee are:

- ✓ Herb Norwegian, Chairperson.  
Herb has been involved with Deh Cho First Nations governance for over 25 years. He was Vice President of the Dene Nation from 1979 to 1993, and Chief for the Liidli Kue First Nation from 1992 to 1997. He has been instrumental in gathering the traditional land use and occupancy mapping information from communities that has formed the basis for the current land use planning process. Herb has also been the Assistant Negotiator of DCFN for the past five years.
- ✓ Tim Lennie, Deh Cho First Nations Representative - Vice-Chair |  
Tim represents DCFN and is Vice-Chairman of the Committee. He has held various leadership positions in the region over the last twenty years and has been actively involved in the Deh Cho Process since the beginning. He is currently Chief of Pehdzeh Ki First Nation.
- ✓ Adrian Boyd, Federal Representative - Secretary-Treasurer  
Adrian has been involved in land use planning for fifteen years with the past twelve years working in northern Canada. He is currently the Senior Policy Advisor for the Nunavut Planning Commission and Canada's representative to the Deh Cho Land Use Planning Committee. Adrian has worked for municipal governments, the GNWT and DIAND where he provided land use planning expertise and assistance to numerous Aboriginal organizations within the Northwest Territories. As well, he previously worked with Nunavut Tunngavik where he specialized in regional land use planning and resource management. Adrian holds a Diploma in Land Use Planning Technology from the College of Geographic Sciences and has completed a Bachelor, Environmental Studies Degree, University of Waterloo and a Certificate in General Social Work Practice from Renison College.
- ✓ Petr Cizek, Deh Cho First Nations Representative - Director  
Petr Cizek is an environmental consultant based in Yellowknife. During the past ten years, he has completed several protected area designs and land use plans in the NWT. He specializes in the integration and analysis of



# 2002-03 Annual Report ~ Deh Cho Land Use Planning Committee

March 31, 2003



traditional knowledge and natural resource data using geographic information systems. He is a graduate of the land use planning programs at the University of Waterloo (BES 1988) and the University of Guelph (MSc. 1992).

- ✓ Bea Lepine, Government of the Northwest Territories Representative - Director

Beatrice Lepine was born and raised in Hay River, NWT. She is a member of a family of trappers and commercial fisherman who have worked on and around the Great Slave Lake area. Beatrice has a Diploma in Renewable Resource Management from Selkirk College and a Diploma in Education from UBC. She has spent over two decades working in various positions in forest fire management in the Northwest Territories. Beatrice is a member of the Mikisew Cree First Nations from Fort Chipewyan, Alberta. She and her spouse and family are still involved in the fishing industry on the Lake. Beatrice is employed by RWED and represents the GNWT on the Deh Cho Land Use Planning Committee.



The following staff members have been recruited and are based out of the head office in Fort Providence:

- ✓ Sophie Bonnetrouge, Office Manager  
Sophie grew up in Fort Providence. She has completed her Adult Basic Education (ABE) and continued on to complete a 2 year diploma program in Management Studies at Aurora College in Fort Smith. As a local, she has been invaluable in developing links between the Planning Committee and the local community in which we operate.

- ✓ Heidi Wiebe, Land Use Planner  
Heidi grew up in Winnipeg where she completed her undergraduate degree in Ecology. She later moved to Calgary to work on a Master's in Environmental Science. Her research has covered such topics as recreation and access management, home range analysis for red squirrels, bison habitat suitability, biodiversity factors in the Cypress Hills, Endangered Species legislation in Canada and an Assessment of Alberta's Protected Areas Strategy.



- ✓ Priscilla Canadien, Land Use Planner Trainee  
Priscilla Ann Canadien grew up in Fort Providence, and lived on the land with her parents (Albert & Caroline Bonnetrouge) when she was younger. She graduated from Sir John Franklin Territorial High School in 1992. She went to Aurora College to upgrade her ABE (Adult Basic Education), and then started the Natural Resources Technology Program (2 year program). She worked for the Fort Providence Resources Management Board for 4.5 years. Priscilla will join the staff in May, 2003 when she finishes her studies at Aurora College.

- ✓ Chris Turner, GIS Analyst  
With over ten years experience in the field of natural resource management, Chris comes to us with a wealth of knowledge in the areas of Regional Land Use Planning, Traditional Land Use Research and Mapping and the application of Geographic Information Systems (GIS) in a wide range of resource management disciplines. Chris has worked for industry, government and First Nations as a manager of GIS operations, a GIS consultant and as a teacher of GIS. Over the years, Chris has taken numerous courses on GIS, GPS and Remote Sensing, including the GIS Technology program at the British Columbia Institute of Technology. Most of

# 2002-03 Annual Report ~ Deh Cho Land Use Planning Committee

March 31, 2003

his work over the past decade has focused on working with a number of BC First Nations to support research, treaty negotiation and Land Use Planning.

## Mission Statement

The Deh Cho Land Use Planning Committee will develop a land use plan as a management tool to determine what type of land use activities should occur and where they should take place. This plan will balance economic, social, environmental and cultural needs and interests.



## Our Guiding Principal

This plan will be guided by the principles of sustainable development and respect for the land as understood and explained by the Deh Cho elders.

## Activities

Progress was delayed by challenges in recruiting appropriate staff. Our Executive Director was recruited and began work in August and was joined by the office manager in October. External consultants were utilized to assist in setting up the operational details of the Committee and office until staff were in place to take over the day-to-day operational functions.



In order to move ahead on the actual planning requirements, the Committee developed, issued and delivered Requests for Proposals for scientific research on natural resource potential in the Deh Cho territory, and for a socio-demographic forecast of job creation needs, as required in Phase 2 of the Guidelines. Seventeen proposals were submitted for 7 contracts. Four contracts were awarded for wildlife potential (EBA Engineering), tourism potential (Deh Cho Environmental), timber potential (PACTeam) and Socio-Demographic research (PACTeam). The Committee decided to keep the agricultural potential contract in house and contacted the C.S. Lord Geosciences Centre in Yellowknife to advise on research for oil and gas and mineral potential in the Deh Cho territory.



## Year End Activity Report

**[November/02 – March/03]**

Due to early challenges and considerable delays in establishing the Committee, recruiting staff and setting up the planning office in the first fiscal year and first half of the second year, the Committee has put in considerable effort to make up time by working on Phases 1 and 2 simultaneously.

## Phase 1 Activity

We are pleased to announce that Phase 1 is now complete. The Committee members have been selected and work very well together. They each bring



# 2002-03 Annual Report ~ Deh Cho Land Use Planning Committee

March 31, 2003

unique strengths and perspectives to the process which provides the Committee with a diverse skill set and a high level of expertise. They bring a combined 90 years of experience in regional land use planning, northern politics and resource management to this process.



Although the Executive Director position is currently vacant the Committee continues to operate effectively. The Committee is considering recruitment options for this position. In February, a GIS Analyst, Chris Turner was found to join our ranks. We expect to be at full staff by May 2003, when our Land Use Planner Trainee, Priscilla Canadien completes the Natural Resources Technology Program at Aurora College in Fort Smith and joins our staff full time.

The office has been established and equipped for the work ahead. Staff have the capabilities to produce regular communications materials and mapping products in house and have already begun production and distribution of introductory packages.



The Committee has formally adopted the Guidelines of the Interim Measures Agreement as their Terms of Reference. In addition, we have prepared and approved a full work plan identifying key steps and timelines for the development and approval of the Deh Cho Land Use Plan (attached). We are currently finalizing internal operational policies on the following subjects to be adopted at the next Board meeting in April:

- ✓ Personnel and Administration;
- ✓ Purchasing and Contracting;
- ✓ Finance;
- ✓ Communications; &
- ✓ Traditional Knowledge.

We have also selected Ashton Accountants as our auditor for the year end financial statements.



## Phase 2 Activity

Following the selection of winning proposals on wildlife, tourism, timber and socio-demographic research at the end of October, contracts were drawn up and signed by the Committee and proponents. Contract Initiation meetings were held with the Contractors in Fort Providence or by teleconference and research was begun. Draft reports were submitted in February and reviewed by staff and Committee members. The Contractors revised the reports based on comments received and submitted final reports on March 31st.

C.S. Lord outlined proper procedures for an assessment of oil and gas and mineral potential in the Deh Cho. Given their expertise and ability to maximize data acquisition through internal mechanisms, a contract for both these projects was negotiated with C.S. Lord and signed in January, 2003. The report for the Committee was completed and delivered on March 31st.

At the same time, the Deh Cho Land Use Planning Committee was outlining the role it would play in developing a Cumulative Effects Assessment and Management Action Plan for the Deh Cho region. The Committee developed

# 2002-03 Annual Report ~ Deh Cho Land Use Planning Committee

March 31, 2003

and distributed another Request for Proposals for the development of a work plan which would lay out the steps, timeframe, resources and priority areas for implementation of a CEAM Action Plan. Two submissions were received and the contract was awarded to Jacques-Whitford on February 7th with a final report due on March 31st.

As a precursor to the eventual implementation of a CEAM Action Plan through the Land Use Plan in the Deh Cho territory, the Committee began searching for ways to gather baseline data on cumulative effects. Given that oil and gas activity and possible pipeline development are major issues in the region for the future, the Committee has also focused on the acquisition of satellite imagery for the Deh Cho territory. This will allow for detailed spatial analysis of linear development, including the ability to measure the current footprint of land uses. This baseline data is essential in long term monitoring of cumulative effects and is critical for modeling relationships and impacts between competing land uses.



DCFN prepared sensitivity maps from the traditional use and occupancy mapping project and transferred these to the Land Use Planning Committee in March.

As a result of this work, a large portion of the information gathering phase of the planning process was completed with the submission of consultant reports and the transfer of data from DCFN on March 31, 2003. We now know what kind of resources exist in the Deh Cho territory, how much there are, and where they are. We also know where and how the people of the Deh Cho have used these resources from the land and what areas are critical to their spiritual, cultural, ecological and economic well being. There will undoubtedly be gaps in the information acquired and the Committee will take steps where necessary to fill those gaps and ensure adequate information exists on which to base land use decisions.



The final portion of information gathering is a critical one and will require considerable time and expertise. The Committee began discussions on what form an Economic Development Assessment of the Deh Cho territory would take (Draft Guidelines, Item 12). We believe it will be a lengthy process, incorporating detailed information on the resource potential of the region, and taking into account ecological and social constraints on development. It must also consider harvesting and traditional economies while giving consideration to how traditional uses relate to the wage economy produced by resource development. Since a proper assessment must incorporate information on the resource potential of the region, this item could not be started this fiscal year. The Committee has budgeted funds in the next fiscal year for a specialized consultant to assist with this important task.



While the work plan indicated that integration and analysis of data would also take place this fiscal year, the delays in completing Phase 1 and getting the resource potential contracts awarded have pushed this item into the next fiscal year. However, an identification of key planning issues, including major development projects, potential protected areas, and community concerns has been initiated. This scoping exercise will save us time next year by focusing the analysis on key questions identified in this process.



March 31, 2003

## Communication



The Committee has made communication a priority for the last quarter of this fiscal year. Work began on a pamphlet in January to introduce the Committee, its mandate and activities. It was completed in time for the Deh Cho Winter Leadership Meeting in Wrigley in mid-February and was subsequently distributed to residents of the Deh Cho region, the Federal and Territorial Governments, and relevant stakeholders. It has been translated into Slavey in preparation for radio and cassette recordings to target a broader audience that is accustomed to oral communication strategies.

A website is under construction and will be launched on Earth Day - April 22, 2003 ([www.dehcholands.org](http://www.dehcholands.org)). Development of the website will be on-going and it will be updated regularly. To further increase its public exposure and raise awareness of its activities, the Committee has developed a range of promotional materials which will be distributed to schools, communities, and relevant interests in the territory. It has started development of a quarterly newsletter which will be released in the new fiscal year.



Communication will be considerably more substantial in the next fiscal year. With the consultant reports now submitted, the Committee will begin producing posters and plain language summaries of the results of each of the reports for distribution to communities, governments and interests in the Deh Cho territory. This will be followed up with presentations to open the discussion around the resources in the Deh Cho and how they should be managed. The Committee expects to release a wave of substantial new information approximately every six months after this, followed by formal consultations. In between that, our regular communication program of website, brochures, newsletters, radio broadcasts and participation in other forums and discussions will maintain general awareness and interest in our activities.

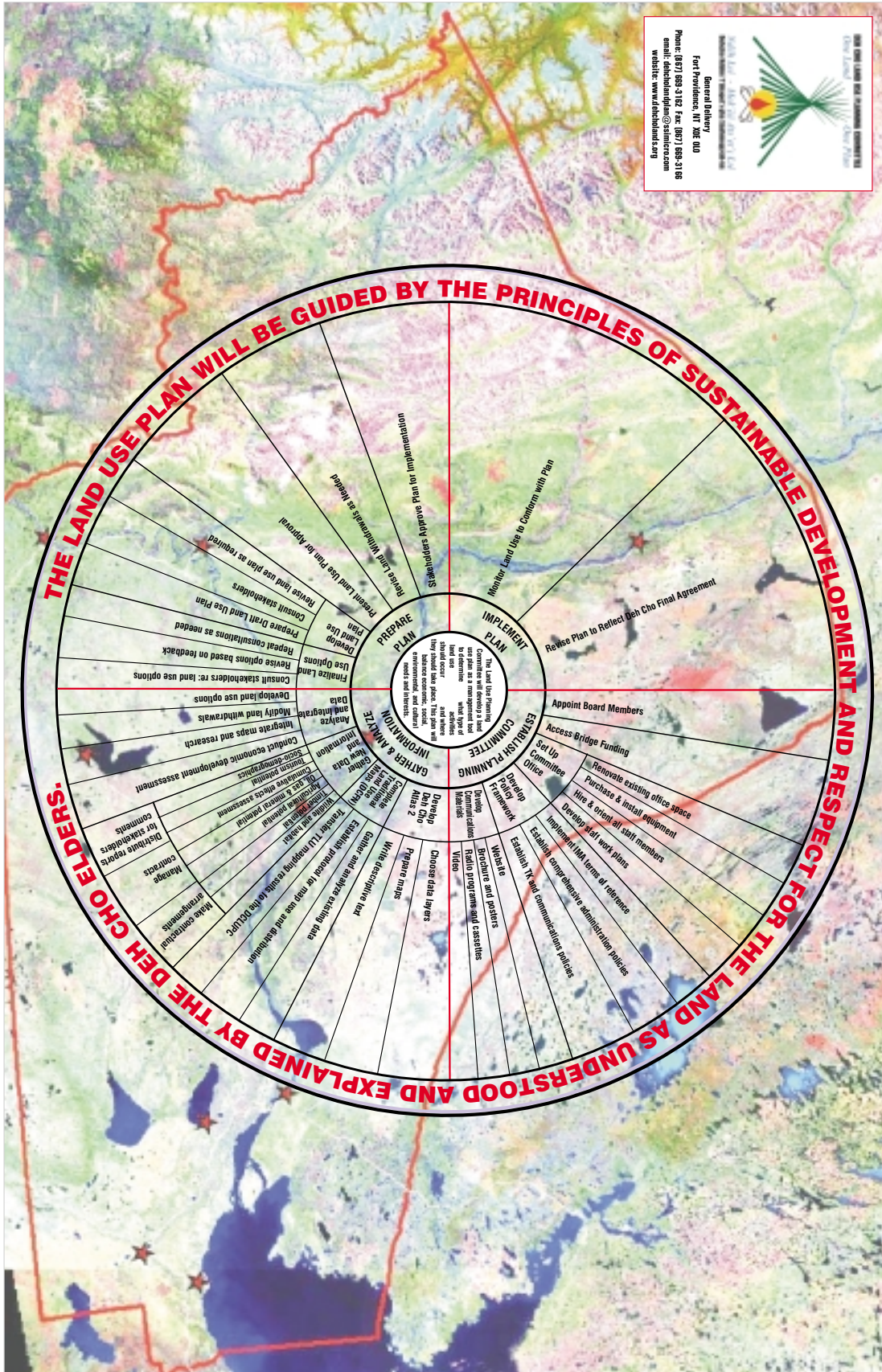
## Conclusion



While the Committee did not complete the analysis stage of Phase 2 as originally anticipated in the workplan, it is now in an ideal position to make excellent progress. The problems that have delayed us to date have now been resolved. We are at full staffing levels and have all necessary operational requirements in place. Our communication strategy is in full swing and moving forward under its own inertia. Considerable information has been gathered and we are set to analyze it, distribute it and consult on it simultaneously. We have a clear path forward and are eager to begin the next stage of our process.

# 2002-03 Annual Report ~ Deh Cho Land Use Planning Committee

March 31, 2003



**2002-03 Annual Report ~ Deh Cho Land Use Planning Committee**

**March 31, 2003**

Financial Statements of

**DEH CHO LAND USE PLANNING  
COMMITTEE**

March 31, 2003



# 2002-03 Annual Report ~ Deh Cho Land Use Planning Committee

March 31, 2003

## Deh Cho Land Use Planning Committee

Financial Statements

For the year ended March 31, 2003

---

Auditors' Report	1
Statement of Revenue and Expenses	2
Statement of Surplus	3
Statement of Investment in Capital Assets	3
Balance Sheet	4
Notes to Financial Statements	5 - 6
Protected Areas Strategy (PAS) - Schedule of Revenue and Expenses	7
Cumulative Effects Assessment and Management (CEAM) - Schedule of Revenue and Expenses	7

# 2002-03 Annual Report ~ Deh Cho Land Use Planning Committee

March 31, 2003

 **ASHTON**  
Chartered Accountants  
Business Advisors

Suite 8-6 Courtoreille St  
Hay River, NT X0E 1G2  
PH: 867-874-6775  
FX: 867 874-3775  
ashton@ssimicro.com

## AUDITORS' REPORT

We have audited the balance sheet of Deh Cho Land Use Planning Committee as at March 31, 2003 and the statements of revenue and expenses, surplus and investment in capital assets for the year then ended. These financial statements are the responsibility of the committee's management. Our responsibility is to express an opinion on the financial statements based on our audit.

We conducted our audit in accordance with Canadian generally accepted auditing standards. Those standards require that we plan and perform an audit to obtain reasonable assurance whether the financial statements are free of material misstatement. An audit includes examining, on a test basis, evidence supporting the amounts and disclosures in the financial statements. An audit also includes assessing the accounting principles used and significant estimates made by management, as well as evaluating the overall financial statement presentation.

In our opinion, these financial statements present fairly, in all material respects, the financial position of the committee as at March 31, 2003 and the results of its operations and the changes in its financial position for the year then ended in accordance with Canadian generally accepted accounting principles.

The comparative statement of revenue and expenses was reported on by Paul Fleury & Co., Certified General Accountant in his audit report dated June 15, 2002.

ASHTON  
Chartered Accountants  
Business Advisors

Hay River, NT  
June 12, 2003



---

[www.ashtonca.com](http://www.ashtonca.com)

# 2002-03 Annual Report ~ Deh Cho Land Use Planning Committee

March 31, 2003

## Deh Cho Land Use Planning Committee

### Statement of Revenue and Expenses

For the year ended March 31, 2003

(with comparative figures for the 10 months ended March 31, 2002)

	2003	*2002
<b>Revenue</b>		
Contribution from Indian Affairs & Northern Development	\$ 1,051,786	\$ 539,000
Contribution repayable	(9,265)	(37,411)
	<u>1,042,521</u>	<u>501,589</u>
<b>Expenses</b>		
Wages and employee benefits	98,396	12,180
Consulting fees	622,833	18,000
Audit and accounting fees	16,338	1,800
Legal fees	3,236	-
Honorariums	10,130	2,400
Board and staff training	5,675	-
Meeting expenses	7,735	-
Travel and per diems	43,853	-
Vehicle	2,029	3,717
Rent	44,115	-
Office supplies	9,239	-
Advertising and promotions	55,309	-
Freight and postage	1,982	-
Bank charges and interest	911	6
Insurance	-	1,440
Telephone and utilities	10,136	-
Repair and maintenance	6,040	-
GST expense	29,851	31,596
Vehicle purchase	-	55,150
Computer hardware and software, office equipment, sattelite, GIS, imagery and mapping equipment	49,123	360,895
Leasehold improvements	25,590	14,405
	<u>1,042,521</u>	<u>501,589</u>
Excess of revenue over expenses for the period	\$ -	\$ -

\* Reclassified for comparative purposes



# 2002-03 Annual Report ~ Deh Cho Land Use Planning Committee

March 31, 2003

## Deh Cho Land Use Planning Committee

### Statement of Surplus

For the year ended March 31, 2003

(with comparative figures for the 10 months ended March 31, 2002)

	2003	2002
Surplus, beginning of period	\$ -	\$ -
Excess of revenue over expenses for the period	-	-
Surplus, end of period	\$ -	\$ -

## Deh Cho Land Use Planning Committee

### Statement of Investment in Capital Assets

For the year ended March 31, 2003

(with comparative figures for the 10 months ended March 31, 2002)

	2003	2002
Balance, beginning of period	\$ 430,450	\$ -
Additions	74,713	430,450
Amortization	(101,033)	-
Balance, end of period	\$ 404,130	\$ 430,450

# 2002-03 Annual Report ~ Deh Cho Land Use Planning Committee

March 31, 2003

## Deh Cho Land Use Planning Committee

Balance Sheet

March 31, 2003

	2003	2002
<b>ASSETS</b>		
Current Assets		
Cash	\$ 526,134	\$ 485,102
Accounts receivable	67,693	16,490
Prepaid expenses	4,942	-
	598,769	501,592
Capital Assets, Notes 3 and 4	404,130	430,450
	\$ 1,002,899	\$ 932,042

## LIABILITIES

Current Liabilities		
Accounts payable and accrued liabilities	\$ 589,504	\$ 464,181
Contribution repayable	9,265	37,411
	598,769	501,592

## EQUITY

Surplus, per accompanying statement	-	-
Investment in capital assets, per accompanying statement	404,130	430,450
	\$ 1,002,899	\$ 932,042

Approved by the Board:

\_\_\_\_\_ Director

\_\_\_\_\_ Director

# 2002-03 Annual Report ~ Deh Cho Land Use Planning Committee

March 31, 2003

## Deh Cho Land Use Planning Committee

Notes to Financial Statements

March 31, 2003

---

Note 1. **Incorporation**

The Committee was incorporated under the Societies Act of the Northwest Territories on January 30, 2002 to develop a land use plan for the Deh Cho territory which promotes the social, cultural and economic well being of residents and communities in the Deh Cho territory.

Note 2. **Measurement Uncertainty**

The financial statements have been prepared by management in accordance with Canadian generally accepted accounting policies. The precise determination of many assets and liabilities is dependent on future events. As a result, the preparation of financial statements for a period involves the use of estimates and approximations which have been made using careful judgement. Actual results could differ from those estimates and approximations. The financial statements have, in management's opinion, been properly prepared within reasonable limits of materiality and within the framework of the accounting policies.

Note 3. **Significant Accounting Policies**

**Capital Assets**

Capital Assets are expensed in the program for which they were purchased and also capitalized on the balance sheet at cost. The investment in capital assets reflects the historical cost of all capital assets owned less amortization. Amortization is calculated at the annual rates set out in Note 4.

**Revenue Recognition**

Revenue is recognized as it becomes receivable under the terms of applicable funding agreements. Funding received under funding agreements which relates to a subsequent fiscal period, or which is being carried forward from the current fiscal period to be used in the subsequent fiscal period or to be repaid to the respective funding agency, is reflected as deferred revenue in the year of receipt and classified as such on the Balance Sheet.

**Economic Dependence**

The Organization is dependent on the Government of Canada - Indian Affairs and Northern Development for funding. Management is of the opinion that operations would be significantly disrupted if the funding was discontinued. Management expects the funding to be continued.



# 2002-03 Annual Report ~ Deh Cho Land Use Planning Committee

March 31, 2003

## Deh Cho Land Use Planning Committee

Notes to Financial Statements

March 31, 2003

---

Note 4. **Capital Assets**

	Rate	Cost	Accumulated Amortization	Carrying Value	
				2003	2002
Vehicles	20%	\$ 55,150	\$ 11,030	\$ 44,120	\$ 55,150
Leasehold improvements	20%	39,995	7,999	31,996	14,405
Computer hardware and software, office equipment, sattelite, GIS, imagery and mapping equipment	20%	410,018	82,004	328,014	360,895
		\$ 505,163	\$ 101,033	\$ 404,130	\$ 430,450

Note 5. **Commitments**

The Organization has entered into a lease for its premises and an operating lease for office equipment. Future minimum payments under these leases are approximately:

For the years ending:	
March 31, 2004	\$ 37,644
March 31, 2005	\$ 37,644
March 31, 2006	\$ 1,370

# 2002-03 Annual Report ~ Deh Cho Land Use Planning Committee

March 31, 2003

## Deh Cho Land Use Planning Committee

Protected Areas Strategy (PAS) - Schedule of Revenue and Expenses

For the year ended March 31, 2003

	2003	2002
Revenue		
Contribution from Indian Affairs & Northern Development	\$ 35,484	\$ -
Expenses		
Consulting fees	35,484	-
Excess of revenue over expenses for the year	\$ -	\$ -

## Deh Cho Land Use Planning Committee

Cumulative Effects Assessment and Management (CEAM) - Schedule of Revenue and Expenses

For the year ended March 31, 2003

	2003	2002
Revenue		
Contribution from Indian Affairs & Northern Development	\$ 16,950	\$ -
Expenses		
Administration fee	1,541	-
Consulting fees	15,409	-
	16,950	-
Excess of revenue over expenses for the year	\$ -	\$ -

# 2002-03 Annual Report ~ Deh Cho Land Use Planning Committee

March 31, 2003



## Our Logo

The logo design was initiated by the Committee Chair, Herb Norwegian and modified through input from other Committee members. The final design was reached by consensus and adopted by all Committee members. Each piece of the logo has special significance to the Deh Cho:

- ✓ The poles of the teepee represent the aboriginal organizations;
- ✓ The fire represents the relationship between the land and the people;
- ✓ The fire logs represent the four directions;
- ✓ Green represents land;
- ✓ Blue represents water;
- ✓ Red represents fire;
- ✓ Yellow represents the sun; and
- ✓ White represents the wind.