

# DEHCHO LAND USE PLANNING COMMITTEE

Update to Dehcho First Nations  
*2012 Assembly*

**DEHCHO LAND USE PLANNING COMMITTEE**  
*One Land One Plan*



*Ndéh Łié - Mek'ée Ats'et'ı Łié*  
**Dehcho Ndéhé T'áhagot'ı gha Sááhniogıpáh-ké**

June 27, 2012

# Presentation Outline

- Who is on Committee?
- 2012 Community Information Sessions
- What has been Accomplished?
- How Does Zoning Work?
- Next Steps
  - Outstanding Issues
  - Timelines



# Who is on Dehcho Land Use Planning Committee?

➤ **Chair**



**Joachim Bonnetrouge**

➤ **Dehcho First Nations**

**Herb Norwegian**  
(Vice Chair)

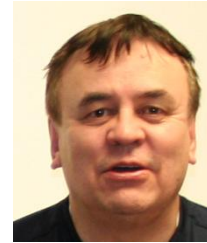


➤ **Dehcho First Nations**

**Vacant**

➤ **Canada**

**Bob Overvold**



➤ **GNWT**



**Shannon Cumming**

# 2012 Community Information Sessions

- ▶ Jean Marie River February 12, 2012
- ▶ Nahanni Butte March 6, 2012
- ▶ Wrigley March 7, 2012
- ▶ Trout Lake March 13, 2012
- ▶ Fort Simpson April 3, 2012
- ▶ Kakisa April 10, 2012
- ▶ Fort Providence April 10, 2012
- ▶ Hay River Reserve April 11, 2012
  
- ▶ *Summary report in delegate binders*

# What has been accomplished?

- ▶ Foundation of plan remains the same (knowledge of elders, hunters and trappers)
- ▶ Balance of lands for conservation and development (48% conservation proposed)
- ▶ Lands near communities have been protected
- ▶ Traditional land use not subject to plan
- ▶ Many meetings with communities over the past 10 years to develop plan

# What has been accomplished?



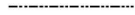









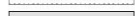
- ▶ Plan manages 5 types of land uses – tourism, commercial timber development, mining, agriculture and oil / gas
- ▶ Rules for development and where land use activities may occur have been clarified
- ▶ Plan to be reviewed every 5 years
- ▶ One of the best and most innovative plans in Canada



# Changes to Zone Boundaries since 2006

## Map 1: Land Use Zones June 2012

### Legend

-  Communities
-  Plan Area
-  Territorial Border
-  All-Season Roads
-  Winter Roads
-  Community Boundaries
- Land Use Zones**
- ZONE TYPE**
-  National Park Reserve
-  Candidate Protected Area Zone
-  Conservation Zone
-  Special Management Zone
-  Special Development Zone
-  General Use Zone
-  Special Infrastructure Corridor

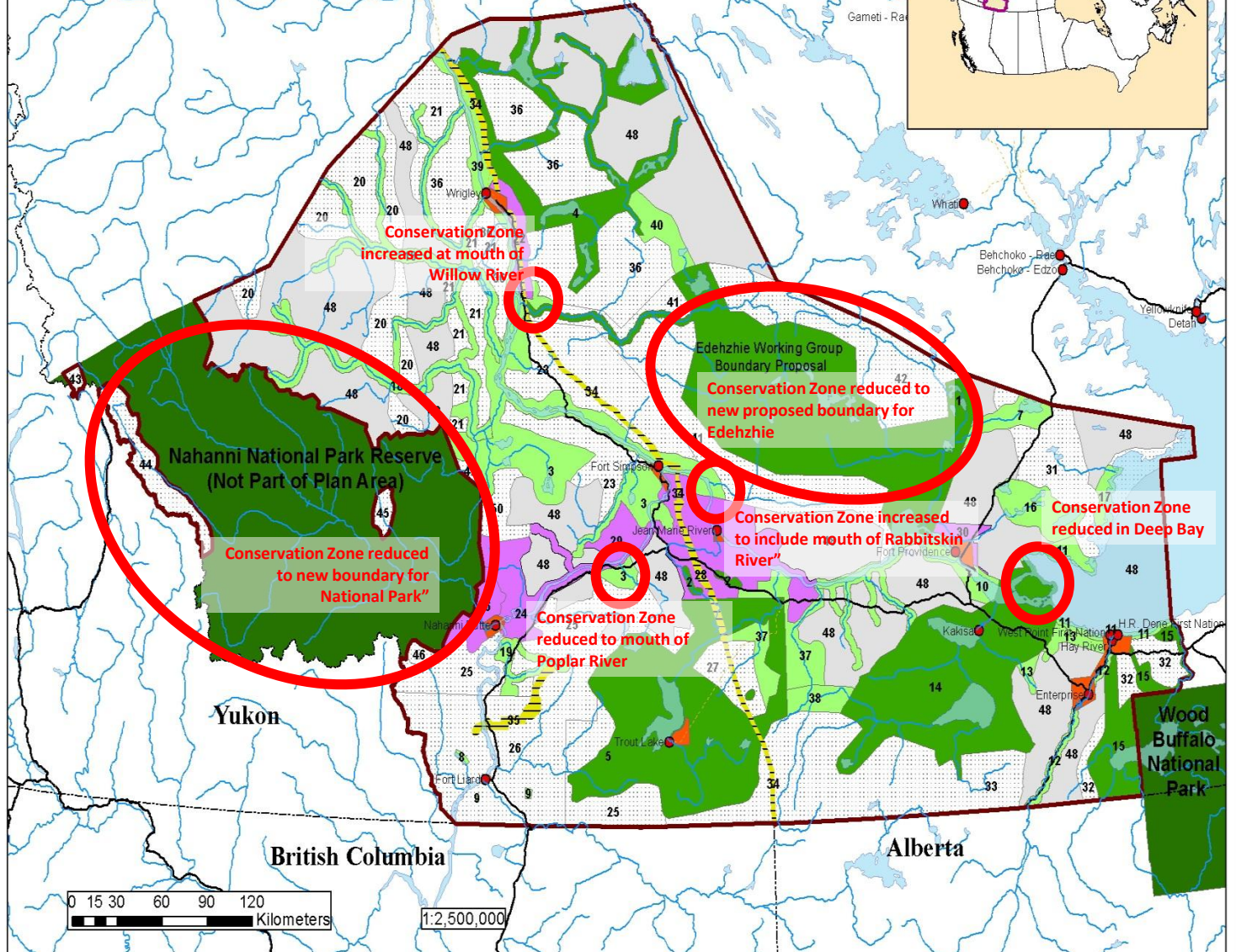
# Zone Numbers

 Change from 2006 Plan



Map updated by: DPI Territorial Consulting  
 Map created in: June, 2012  
 Data Source: DLUPC,  
 GeoBase, Geogatis, GNWT  
 Map Projection:  
 Lambert Conformal Conic  
 Central Meridian: 122w  
 Reference Lat: 60n  
 Standard Parallels at  
 60n and 65n

NOTE: Existing uses present on day prior to Plan approval are not subject to the plan.



# How does Zoning Work?

ZONE TYPE	SQ KM	PERCENT	PERMITTED LAND USES
Candidate Protected Area	42,432.05	23.01%	No tourism, agriculture, commercial timber development, mining, oil / gas
Conservation	22,803.26	12.37%	Tourism*
Special Management	8,766.62	4.75%	Tourism, Agriculture, Commercial Timber Development
Special Development	66,248.51	35.92%	Tourism, Agriculture, Commercial Timber Development, Mining, Oil / Gas **
General Use	44,164.62	23.95%	All
<b>TOTAL</b>	<b>184,415.06</b>	<b>100.00%</b>	

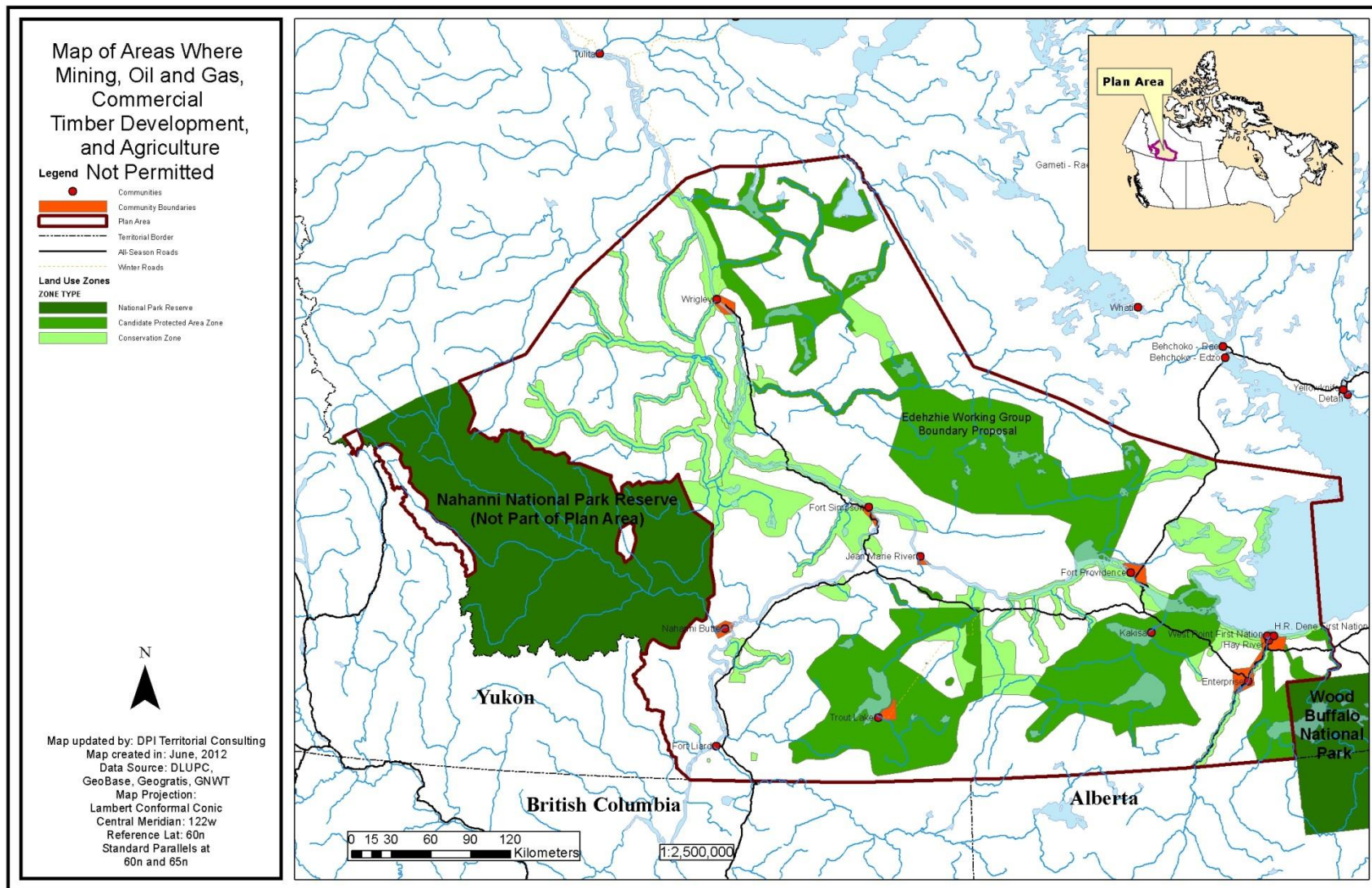
**Special Infrastructure Corridor** 2,161.84 01.17% These overlay other zones and do not add to the percentages in other totals.

\* Except Birch Lake Conservation Zone

\*\* Permitted land uses must protect significant cultural and ecological features

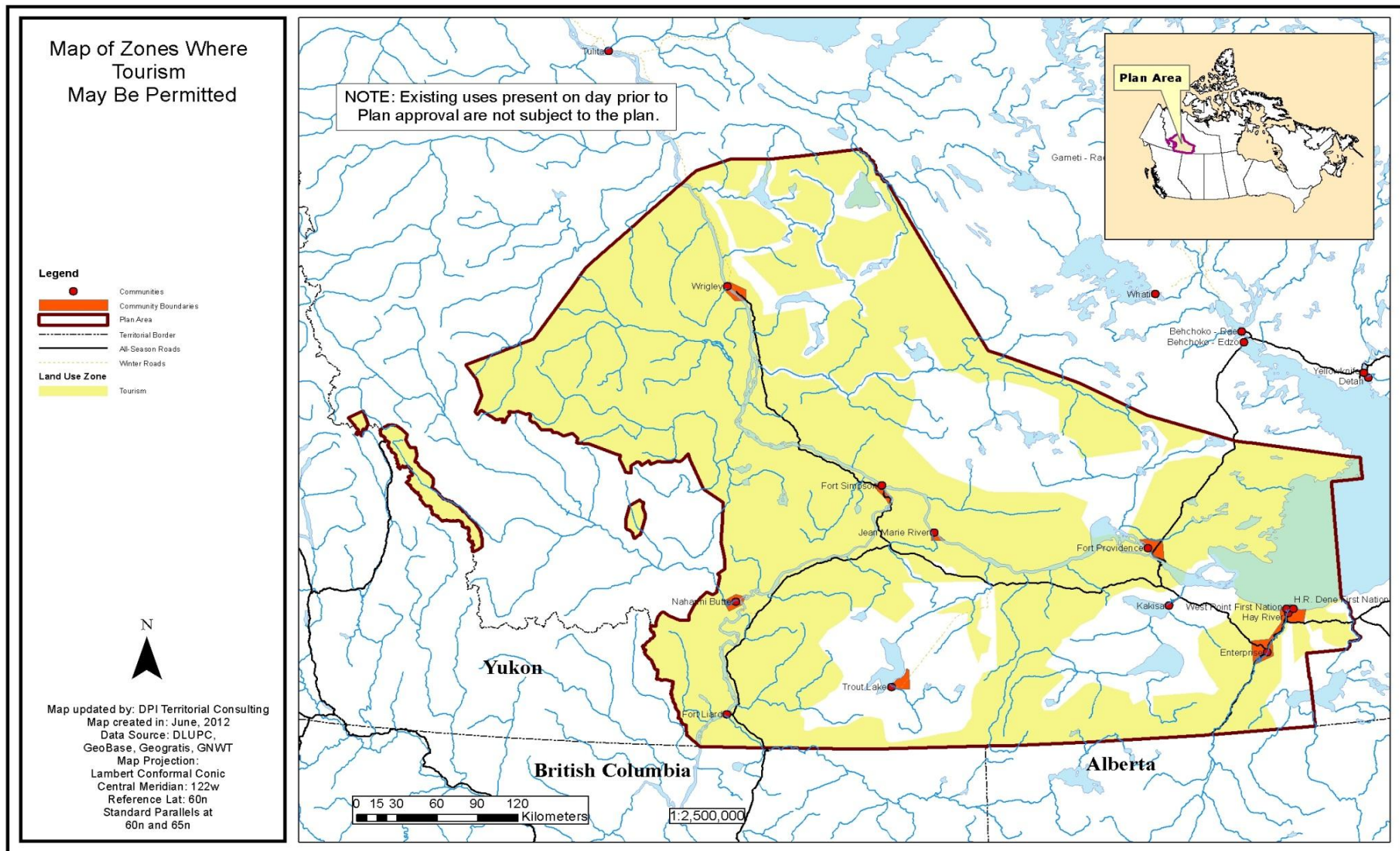


# How does Interim Plan protect the land?



➤ 48% of Dehcho is protected, including national parks

# Where does Interim Plan encourage tourism?



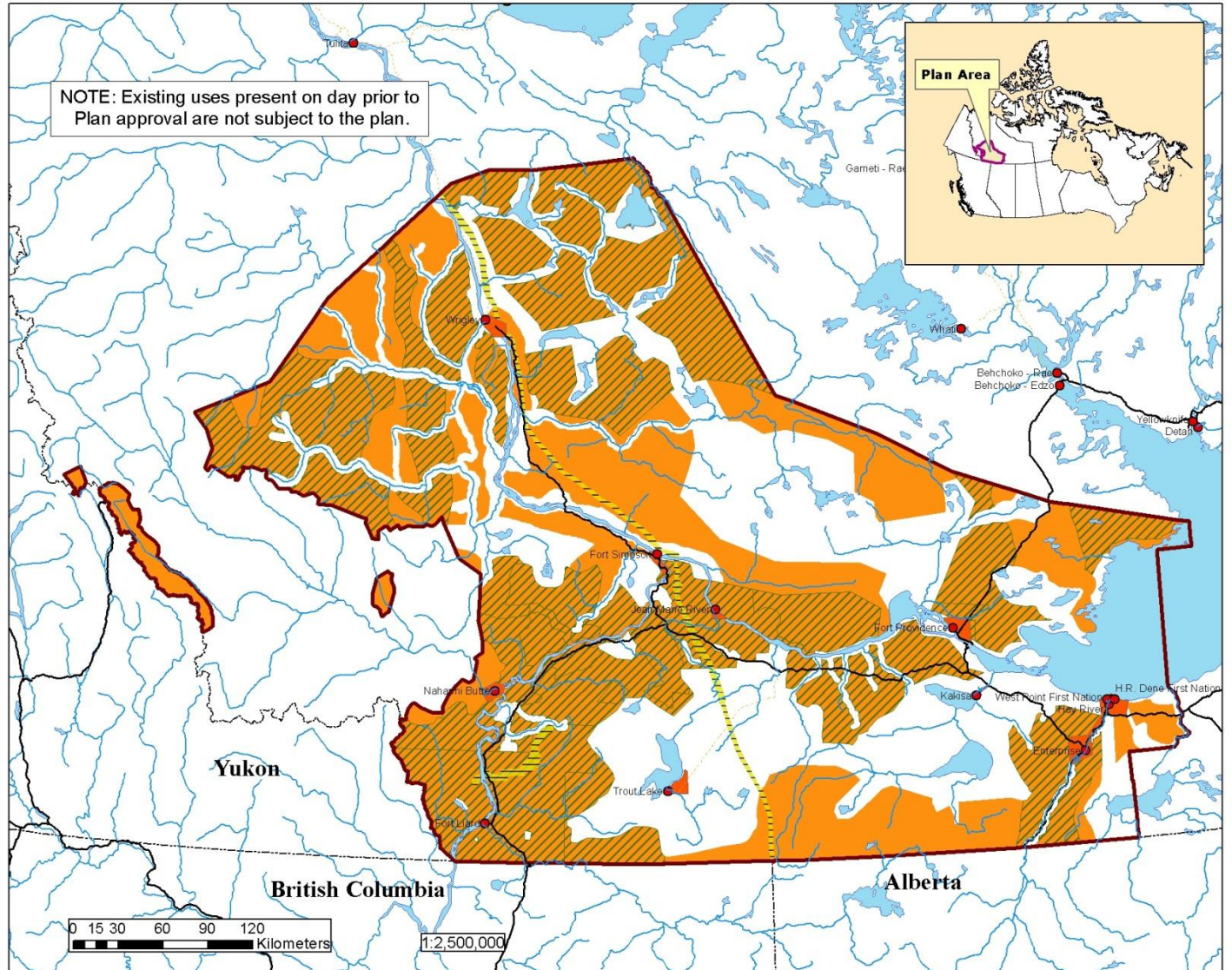


# Where does Interim Plan support agriculture and commercial timber development?

## Map of Zones Where Agriculture and Commercial Timber Development May Be Permitted

- Legend**
- Communities
  - Plan Area
  - Territorial Border
  - All-Season Roads
  - Winter Roads
  - Community Boundaries
  - Land Use Zones**
    - Special Infrastructure Corridor
    - Agriculture and Commercial Timber
    - Commercial Timber Development

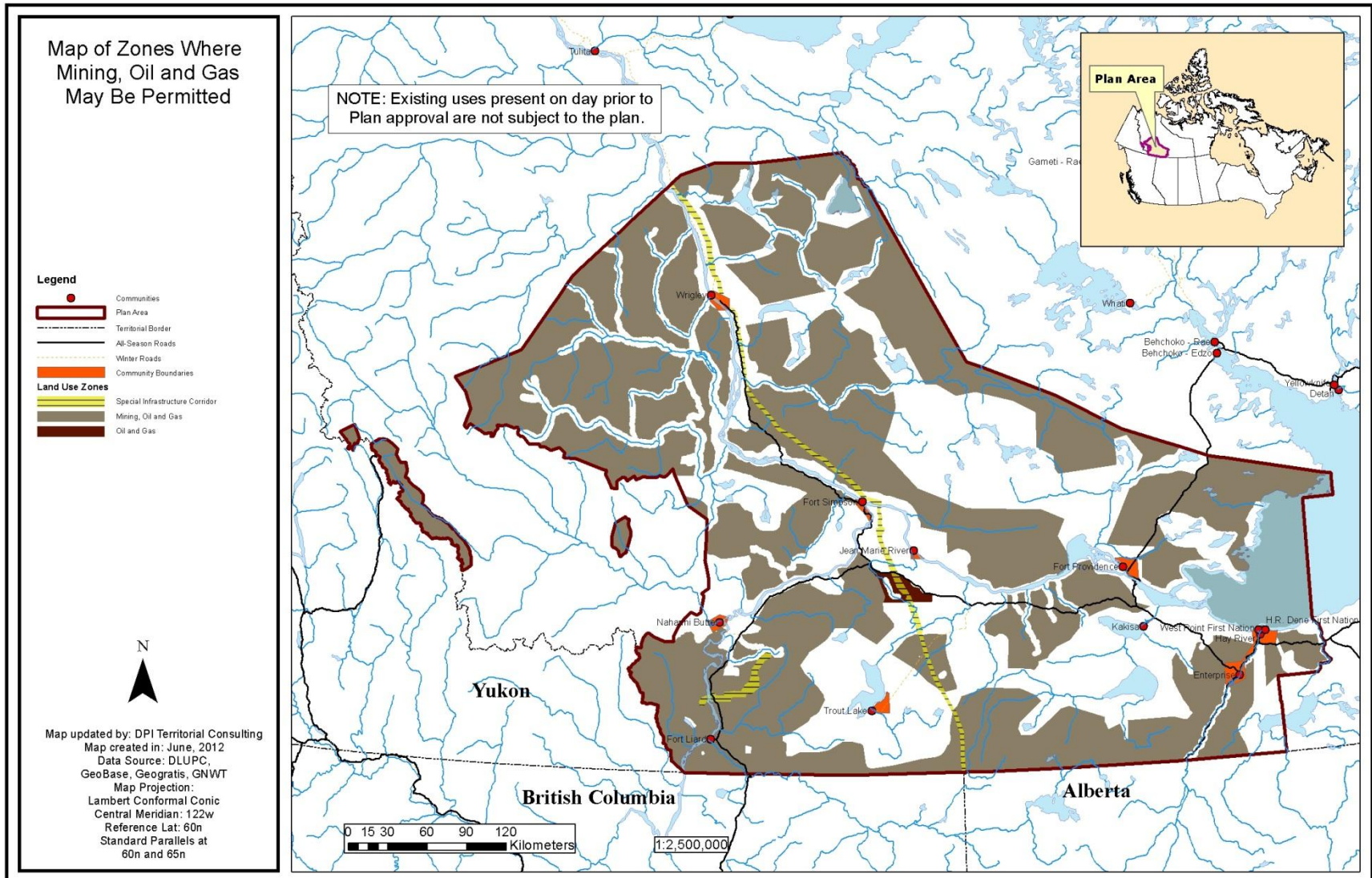
NOTE: Existing uses present on day prior to Plan approval are not subject to the plan.



Map updated by: DPI Territorial Consulting  
Map created in: June, 2012  
Data Source: DLUPC, GeoBase, Geogratis, GNWT  
Map Projection: Lambert Conformal Conic  
Central Meridian: 122w  
Reference Lat: 60n  
Standard Parallels at 60n and 65n

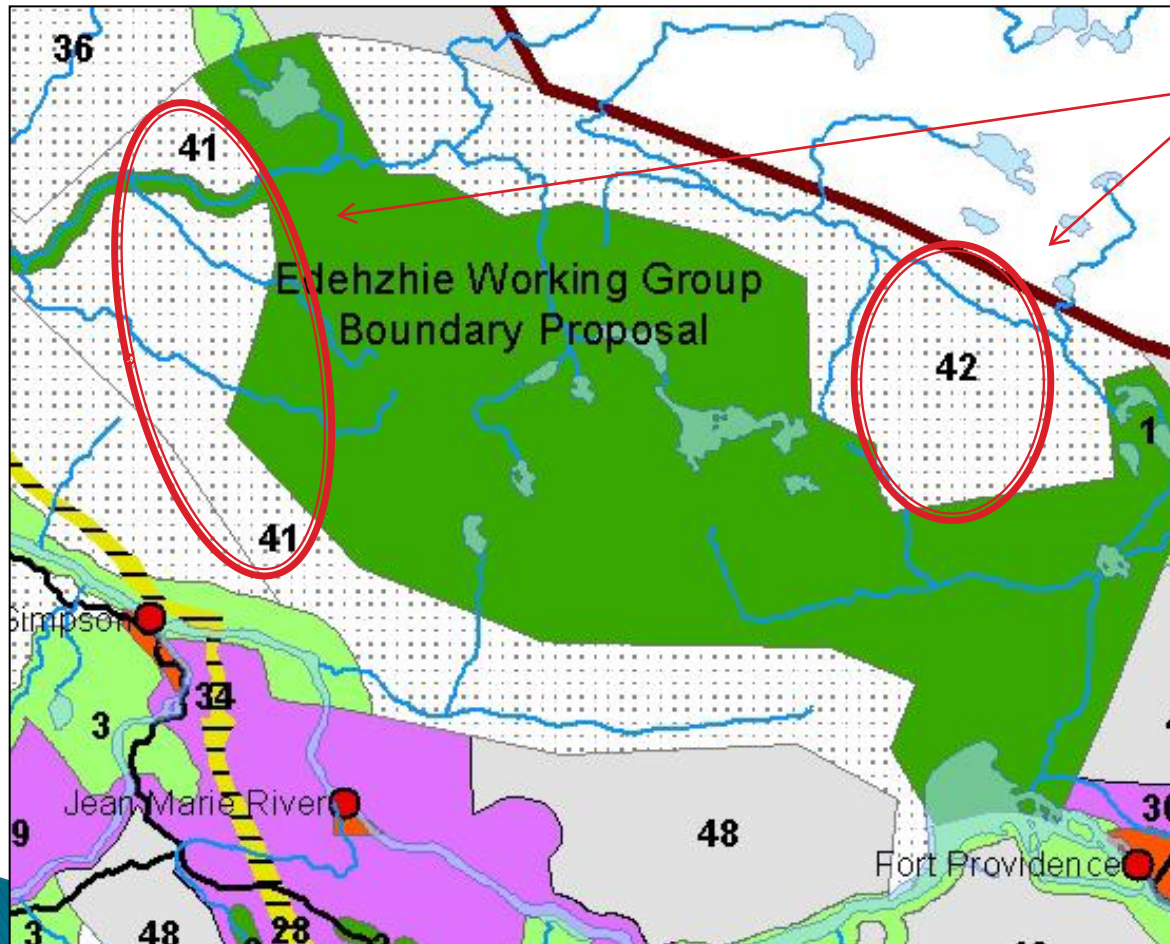


# Where does Interim Plan encourage mining and oil and gas?



# Next Steps

## – Key Outstanding Issue for *Committee*



### **Balance of Lands -**

Zoning of two areas not included in proposed boundary for Edehzhie

**October 2011** – Interim Plan proposed Special Development zoning for two areas and balance of 48% conservation and 51% development for total plan

**November 2011** – DFN proposed Conservation zoning for two areas

**June 2012** – Committee reviewing options for zoning



# Next Steps

## – Key Outstanding Issues for *Main Table*

- National Energy Board/Mackenzie Gas Pipeline
  - ability of the interim plan to determine location of pipelines
- Transportation Corridors - ability of interim plan to determine the location of public roads
- Relationship of the Interim Plan to *Dehcho Interim Measures Agreement* – quarrying, prospecting permits, forest management
- Termination of the Interim Plan - how many parties have to agree
- Extent of the Interim Plan area – where it will apply
- Percentage of open crown land

# Next Steps – Timelines

Summer  
2012

- June – 2011–12 Annual update to DFN Annual Assembly
- Summer – Rolling Draft to Parties (DFN, GNWT and Canada) for review

Fall  
2012

- Sep 5–7 – workshop with community resource managers on zoning
- Fall – DLUPC workshop on process to implement interim plan
- Fall – presentations to industry and other stakeholders on revised plan
- December – draft implementation plan

Winter  
2013

- January – review comments from Parties on Rolling Draft and Outstanding Issues
- TBC – Community information sessions on draft implementation plan
- DLUPC recommend draft plan process to implement interim plan for approval by Parties