

## DEHCHO DENE NAHODHE

*“Yamoria came to the homeland of the Dehcho Dene with laws from the Creator. These laws were given to the Dene to live by. The most important law was respect for Creation—Mother Earth. We were put here by the Creator to take care of Mother Earth. The foundation of our Dehcho government and Mother Earth is Nahe Nahodhe. Nahe Nahodhe is who we are and where we came from. We stand firm behind this belief.”*

Accepted by the Elders and Youth at the Dehcho Land Use Planning Committee's Dene Nahodhe Workshop in Fort Providence on April 1, 2004.

*Traditional hunting and trapping activities are not affected by the land use plan.*

### Committee Members 2012-13

Chair	Dehcho First Nations
Joachim Bonnetrouge	Herb Norwegian (Vice Chair),
<b>Government of Canada</b> Bob Overvold, (resigned July 2012)	Allen Bouvier (Director)
<b>Government of the NWT</b> Shannon Cumming (Secretary-Treasurer)	



Herb                      Allen  
Shannon                      Joachim

#### Contact Information:

Dehcho Land Use Planning Committee  
P.O Box 199, Fort Providence NT, X0E 0L0  
Phone: (867) 699-3162  
Fax: (867) 699-3166  
Email: dclandplan@ssimicro.com

Website: [www.dehcholands.org](http://www.dehcholands.org)

## Dehcho Land Use Planning Committee

### 2012-2013 ANNUAL REPORT



#### DEH CHO LAND USE PLANNING COMMITTEE *One Land One Plan*



*Ndéh Łié - Mek'ée Ats'et'ı Łié*  
Dehcho Ndéhé T'áhagot'ı gha Saáhniojıáh-ké

### Chairman's Message

In 2012-13, my priority as the new chair of the Dehcho Land Use Planning Committee was to update Dehcho communities on the status of the Draft Interim Plan. We did this by holding community information sessions, workshops with Dehcho resource managers and Dehcho Leaders and developing a new one page format for the annual report which was mailed to all the Dehcho households and businesses. The Committee also initiated a scholarship for a Dehcho resident (awarded to Jarrett Hardisty of Fort Simpson) and hired a summer student to provide youth with an opportunity to consider land management as a future career choice. In January 2013, the Committee held a Strategic Planning Workshop to develop a 2013-14 work plan and prepare an outline for a five year plan to identify key tasks to complete an Interim Plan and prepare for implementation. The Committee held a land use plan terminology workshop on March 26-28 in Kakisa to assist with the future implementation of the plan. Products included a list of translated land use planning terms and video clips of the Dene translations. Both will be posted on the website.

It was a pleasure to travel to communities, and I look forward to completing the Interim Plan in 2013-14.

**Joachim Bonnetrouge, Chair  
Dehcho Land Use Planning Committee**

**2012-13 Dehcho First Nations Updates**

1. June 27, 2012—Annual Assembly, Fort Simpson

**2012-13 Dehcho Community Information Sessions**

1. April 3, 2012—Fort Simpson
2. April 10, 2012—Kakisa
3. April 10, 2012—Fort Providence
4. April 11, 2012—Hay River Reserve
5. January 31, 2013—Trout Lake

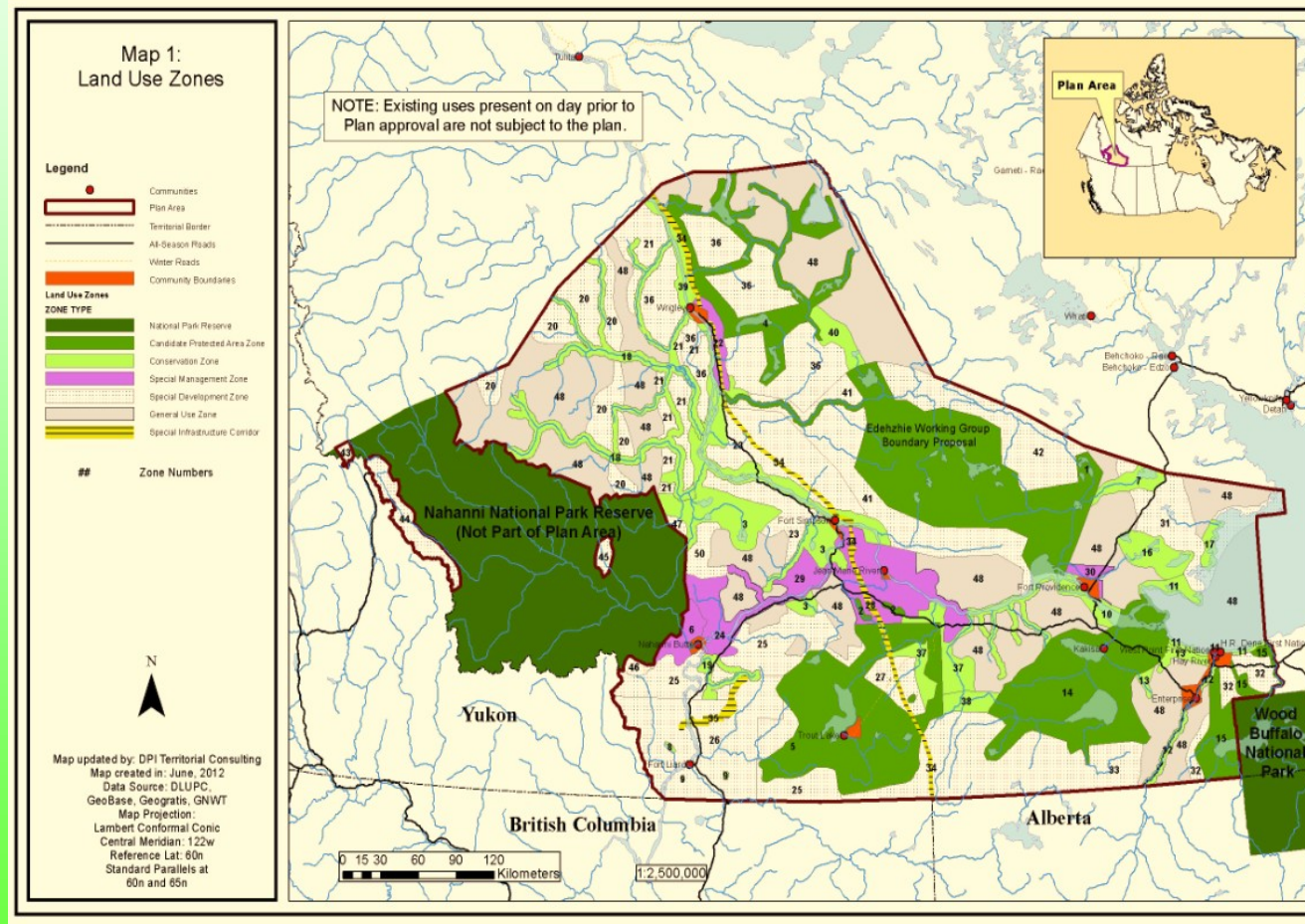
**2012-13 Workshops**

1. October 29-30, 2012 (Fort Providence) - Dehcho Resource Managers from Deh Gah Gotie First Nation, Fort Providence Metis Local, Jean Marie River, Ka Gaa Tu First Nation, K'aatlodeeche First Nation
2. December 12, 2012—Dehcho Leadership Workshop
3. January 14, 2013—Committee 2013-14 Strategic Planning Workshop
4. February 6-7, 2013 (Fort Simpson) - Dehcho Resource Managers from Dehcho First Nations, Fort Simpson Metis Local, Lidlii Koe First Nation, Nahanni Butte Dene Band
5. February 14, 2013—Dehcho Leadership Workshop
6. March 26-28, 2013—Terminology Workshop, Kakisa

**How does Zoning Work?**

ZONE TYPE	SQ KM	PERCENT	PERMITTED LAND USES
Candidate Protected Area	42,432.05	23.01%	No tourism, agriculture, commercial timber development, mining, oil / gas
Conservation	22,803.26	12.37%	Tourism*
Special Management	8,766.62	4.75%	Tourism, Agriculture, Commercial Timber Development
Special Development	66,248.51	35.92%	Tourism, Agriculture, Commercial Timber Development, Mining, Oil / Gas **
General Use	44,164.62	23.95%	All
<b>TOTAL</b>	<b>184,415.06</b>	<b>100.00%</b>	
Special Infrastructure Corridor	2,161.84	01.17%	These overlay other zones and do not add to the percentages in other totals.

\* Except Birch Lake Conservation Zone  
 \*\* Permitted land uses must protect significant cultural and ecological features



**Congratulations to Jarret Hardisty of Fort Simpson!** The first Dehcho resident to win the 2012 Leo Norwegian Memorial Scholarship provided by the Dehcho Land Use Planning Committee.



Participants in the Dehcho Land Use Plan terminology workshop held in Kakisa March 2013.