

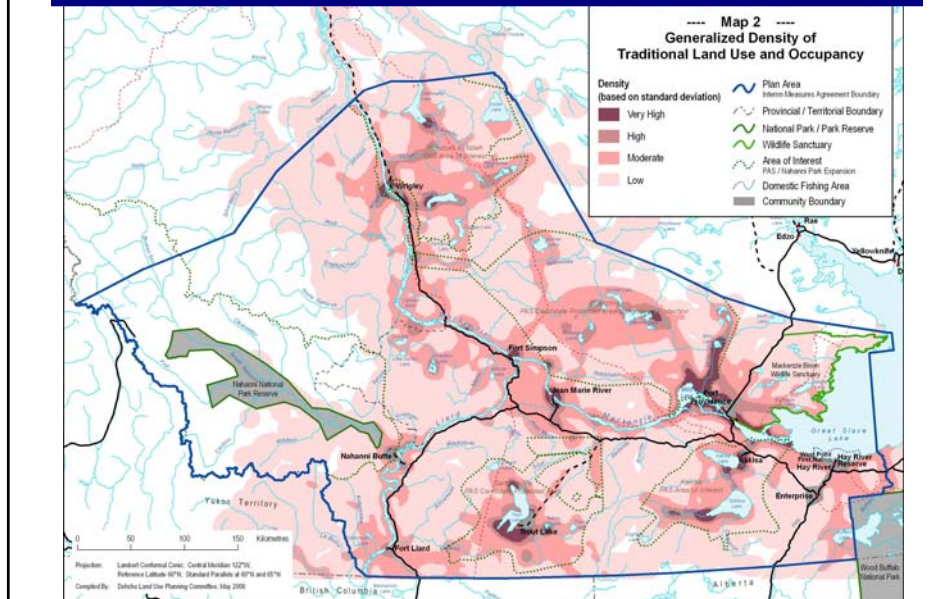
Plan Development

- 5 Years of Work
- 140+ Meetings
- 2 Regional Forums
- 12 Leadership, Elders Meetings and Negotiation Sessions
- 4 Dehcho Assemblies
- 2 Special Workshops (Wildlife and Dene Nahodhe)
- Various Other Meetings
- 20 Research Projects
- 4 Drafts: Working Draft, Draft, Revised Draft and Final Draft
- ~150 Written Submissions
- 1200+ Comments & Responses

Traditional Use Density

- Important to Traditional Dene Lifestyle's
- DFN consulted over 386 harvesters and mapped information
- Harvest areas, kill sites, sacred sites, berry patches
- DFN approved publication and use at Kakisa Assembly 2004

Traditional Land Use and Occupancy



Traditional Activities

Dehcho Community	Hunt and Fish (%) of population	Trap (%) of population	(%) of Households Consuming 50% or more Country Food
Hay River	26.4	2.2	14.1
Fort Providence	44.3	14.8	64.2
Fort Simpson	39.1	8.7	34.3
Fort Liard	60.7	14.9	61.5
Hay River Reserve	37.7	12.7	71.3
Jean Marie River	66.7	35	79.2
Kakisa	69.4	41.7	92.9
Nahanni Butte	58.5	11	52.8
Wrigley	47	20.1	70.4
Trout Lake	86.8	44.1	77.4
Enterprise	28.1	0	14.8
Dehcho Wide	36.1	7.7	33
Dehcho Wide (Excluding Hay River)	46.6	13.7	53.5

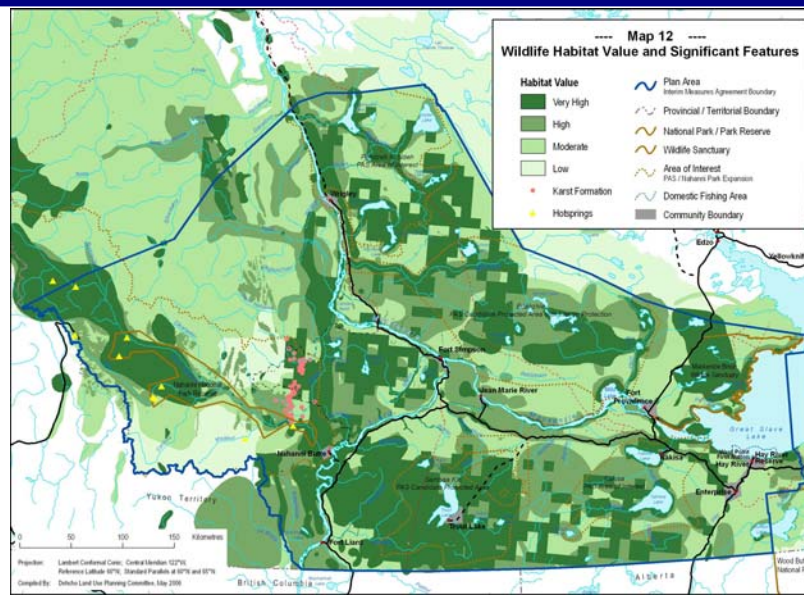
Wildlife Workshop

- Held: November 24th – 28th, 2003
- Hunters, trappers, harvesters and biologists from the Deh Cho territory
 - To fill information gaps in Wildlife Research
 - To integrate traditional and scientific knowledge



- Created New Wildlife (Habitat Values Map)

Wildlife



Dene Nahodhe Workshop

- Held: March 29th – April 2nd, 2004
- To integrate the Dene Cultural Values into Land Use Plan decisions
- Elders, Youth and Guest Speakers from across the Dehcho
- Yamoria Laws, Dene Customs, Holistic Approach to Land Use Planning
- Deh Cho Dene Nahodhe Statement
- Ongoing Process – People Implement Plan

Deh Cho Dene Nahodhe

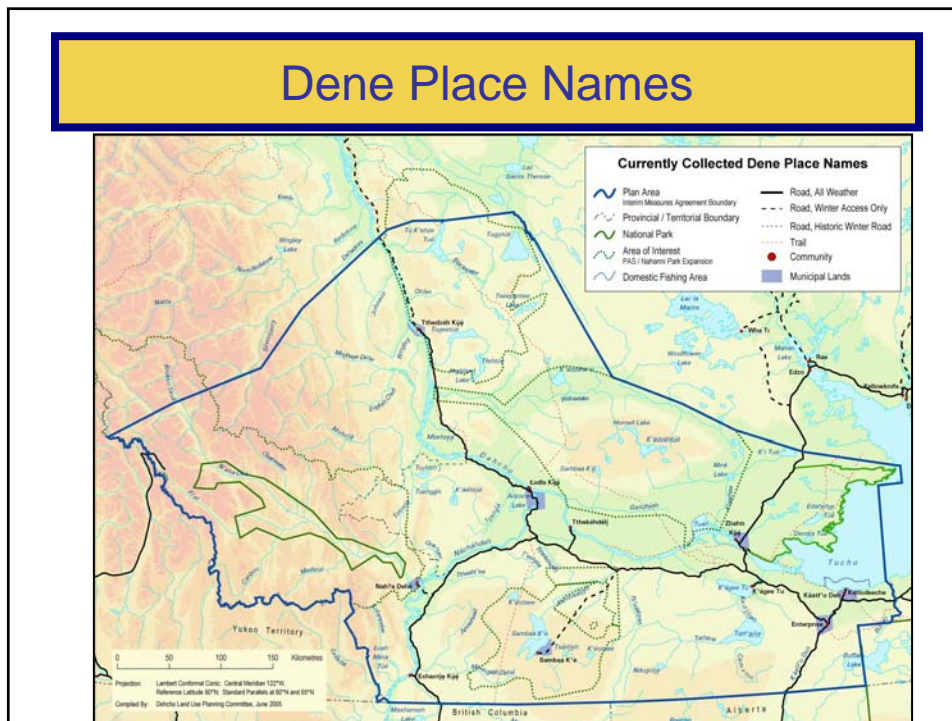
“Yamoria came to the homeland of the Deh Cho Dene with laws from the Creator. These laws were given to the Dene to live by. The most important law was respect for Creation – Mother Earth. We were put here by the Creator to take care of Mother Earth. The foundation of our Deh Cho government and Mother Earth is Nahe Nahodhe. Nahe Nahodhe is who we are and where we came from. We stand firm behind this belief.”

Accepted by the Elders and Youth at the Deh Cho Land Use Planning Committee's Dene Nahodhe Workshop in Fort Providence on April 1, 2004.

Deh Cho Dene Nahodhe

- How should Dene values and principles be applied to new land uses?
- Can you develop Oil and Gas and continue to respect the earth?
 - Ceremony i.e. Fire Feeding
 - Only taking what you need – pacing development
 - Not wasting resources – salvage logging along pipeline corridor
 - Monitoring and managing Wildlife – Cumulative Effects
 - Sharing and helping all Deh Cho Communities

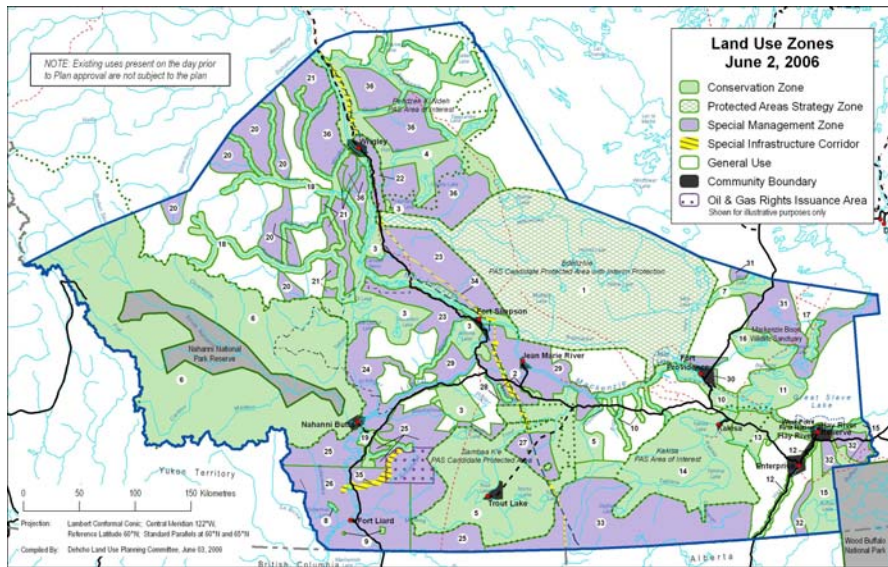
Dene Place Names



Land Use Planning Process



Final Draft Land Use Map



Plan Terms

- **Terms:** The Plan includes Terms to guide the future development of the Dehcho and address issues raised during Plan development.
 - **Conformity Requirements (CR):** conditions for development that the DLUPC will monitor
 - **Actions (A):** conditions for development that government will monitor
 - **Recommendations (R):** provide guidance to our planning partners on additional activities that will help achieve the goals of the Plan.

Dene Culture and Traditional Use

Respect Dene Laws, Values and Principles	R #2	▪Respect Dene Laws, Values and Principles
	R #3	▪Fire Feeding Ceremony
	R #4	▪Show Respect
	R #5	▪Sharing
	R #6	▪Take Only What You Need
	R #7	▪Do Not Waste
	Preservation of Culture and Language	R #8
Use and Recognition of Traditional and Cultural Knowledge	CR #3	▪Relevant traditional knowledge and scientific data will be documented and considered before new uses are approved
	R #9	▪Use DFN(s) Traditional Knowledge Policy / Protocols
	R #10	▪Integrate Traditional Knowledge into decision making
	R #11	▪Provide cultural employment opportunities

Dene Culture and Traditional Use

Protection of Significant Traditional Land Use and Occupancy Sites	<p>CR #4</p> <ul style="list-style-type: none"> ▪ Assess impacts on known historical, archaeological, cultural and traditional land use and occupancy sites. ▪ Demonstrate meaningful community involvement. ▪ Responsible Authorities to consider information in decisions. ▪ Consultation required before removing heritage resources. <p>A #1</p> <ul style="list-style-type: none"> ▪ DFN make best efforts to compile a database of TLUO sites, burial grounds, sacred sites, cabins, trap lines and cultural sites.
Use of Guides and Monitors	<p>R#12</p> <ul style="list-style-type: none"> ▪ Applicant will notify First Nation 10 days before arrival <p>A #2</p> <ul style="list-style-type: none"> ▪ DFN will make best efforts to outline contract terms and develop a list of potential guides and monitors <p>R#13</p> <ul style="list-style-type: none"> ▪ DFN to explore use of guides and monitors further through Dehcho Process negotiations
Plant Gathering Areas	<p>CR #5</p> <ul style="list-style-type: none"> ▪ Applicant to coordinate with community to identify Plant Gathering Areas to be avoided or mitigated for. ▪ May be required to survey affected area for plants. <p>A #3</p> <ul style="list-style-type: none"> ▪ DFN(s) will develop a list of culturally important plants

Mahsi Cho!